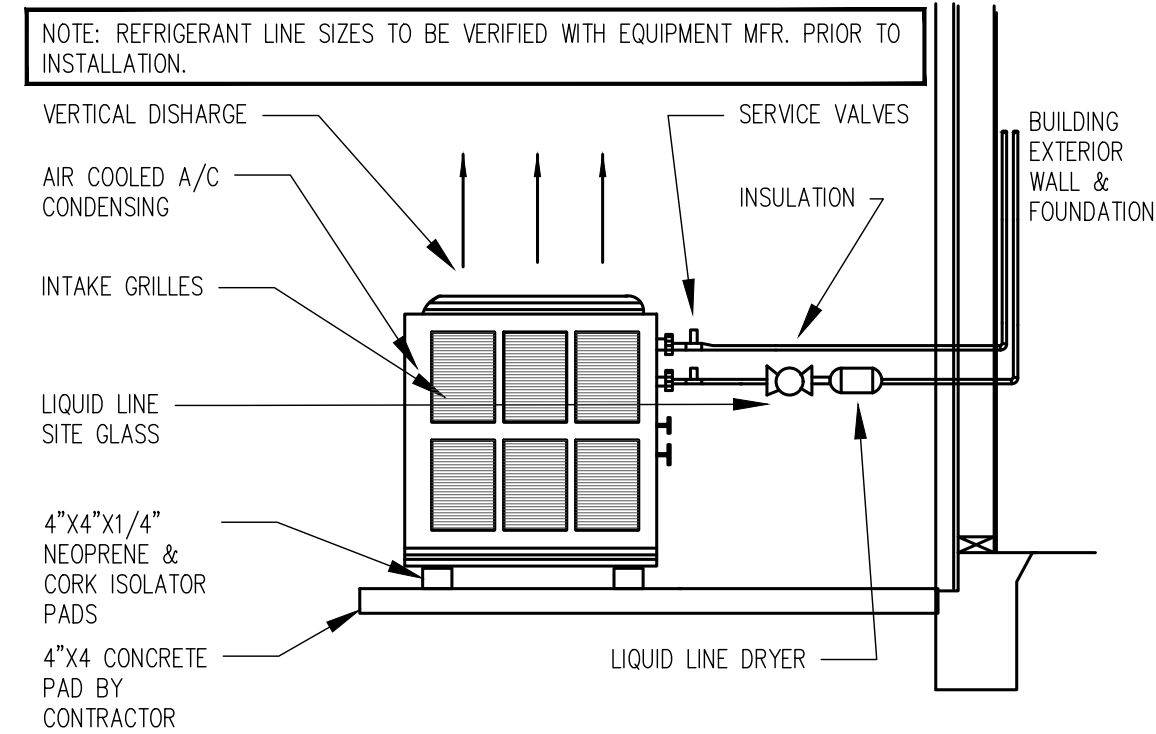
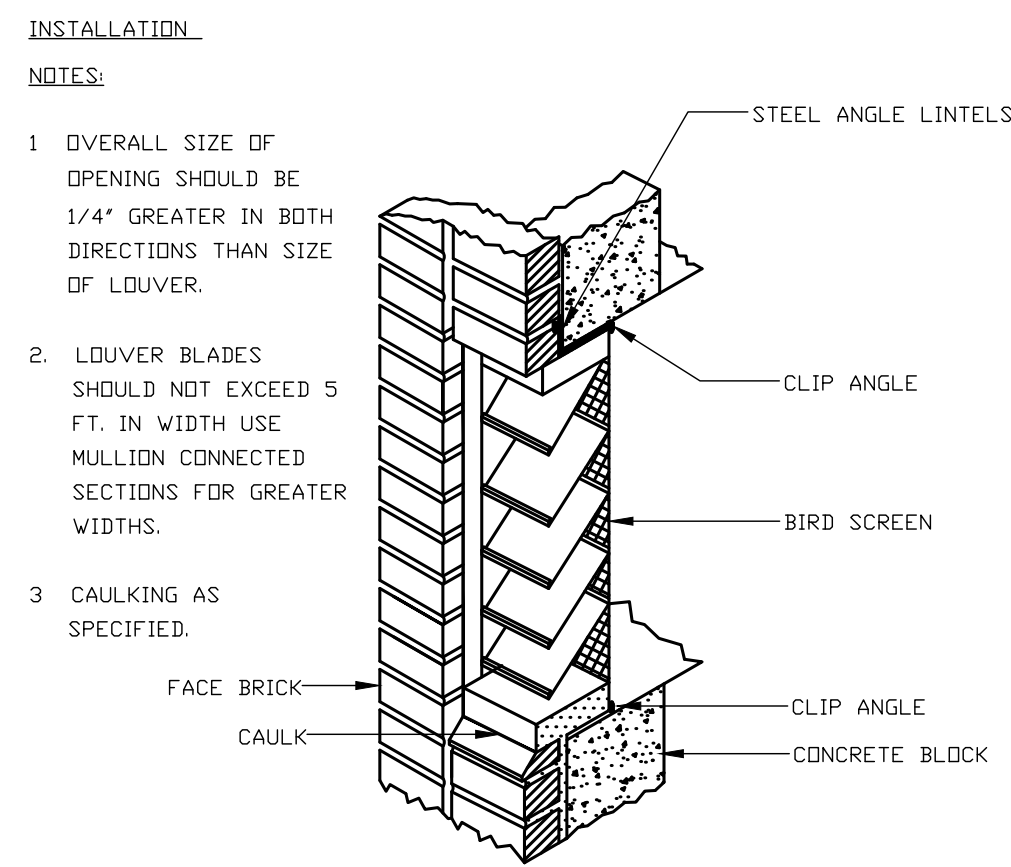


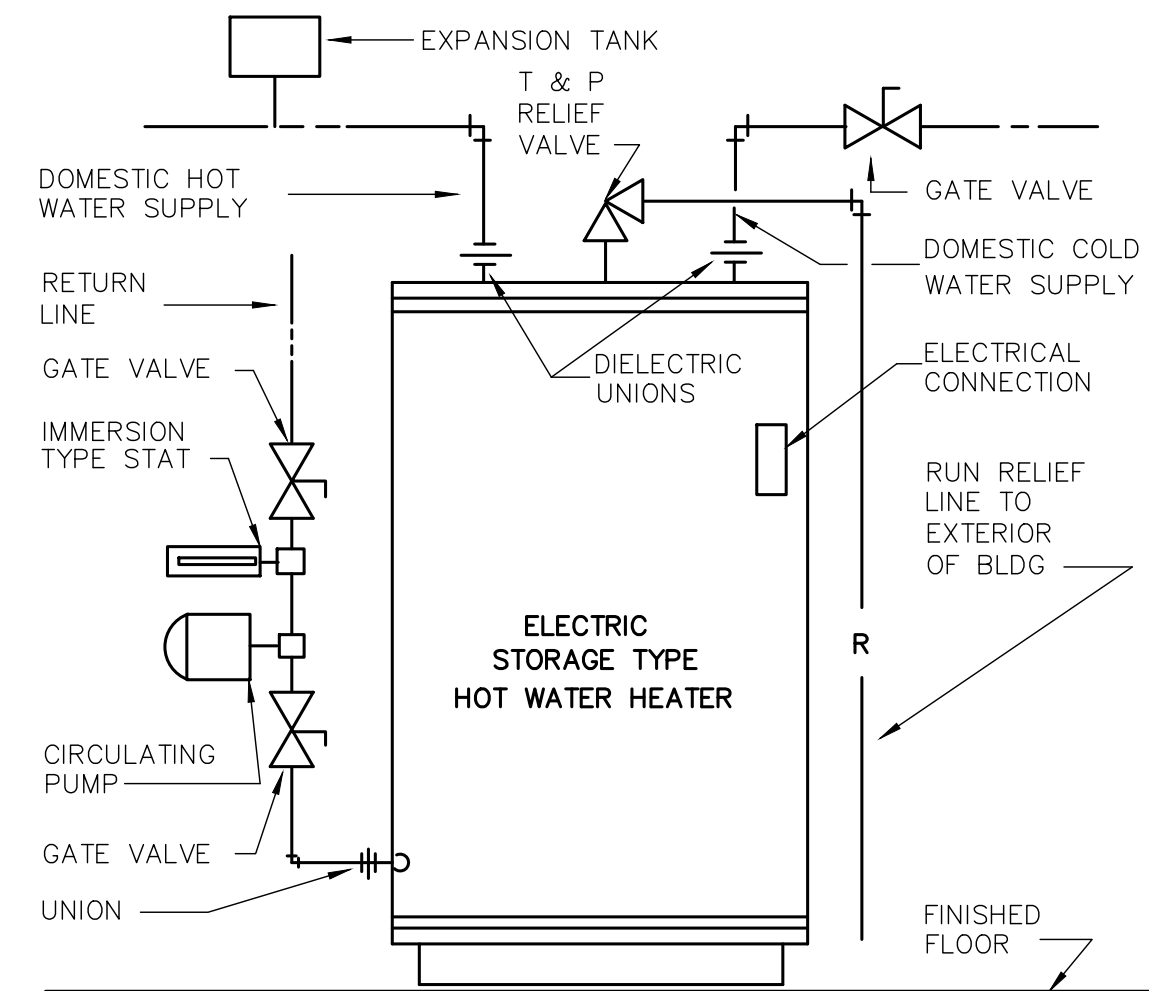
**01 VERTICAL A/C UNIT ON PLYWOOD PLATFORM**  
SCALE: N.T.S.



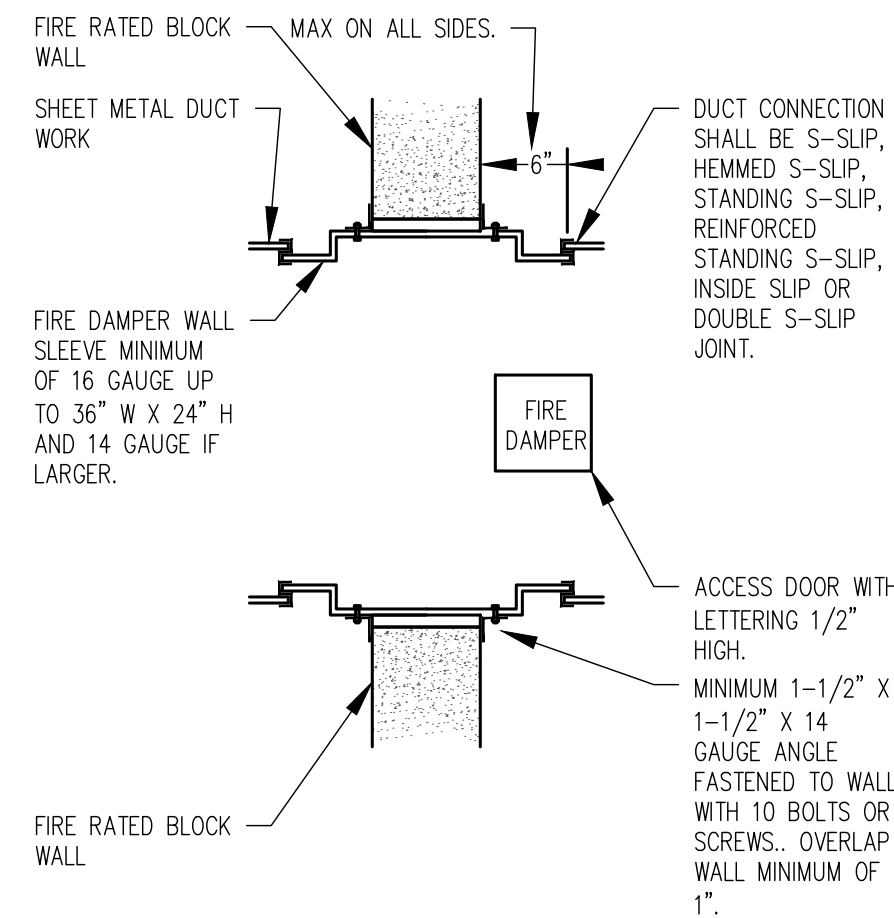
**02 CONDENSING UNIT DETAIL**  
SCALE: N.T.S.



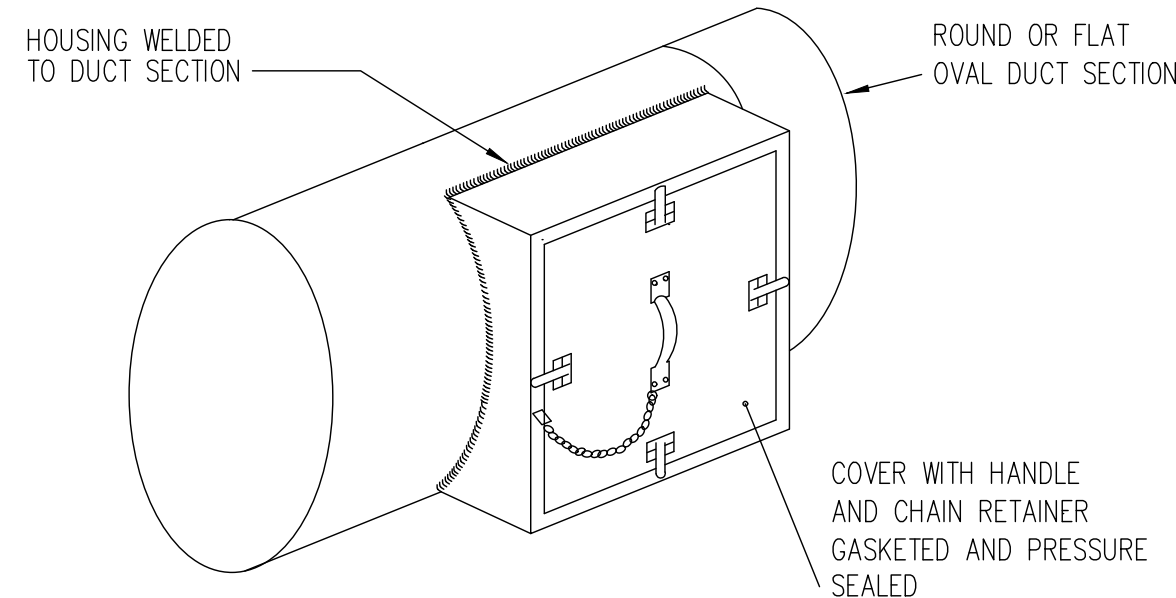
**03 INSTALLATION OF THE FIXED LOUVER DETAIL**  
SCALE: N.T.S.



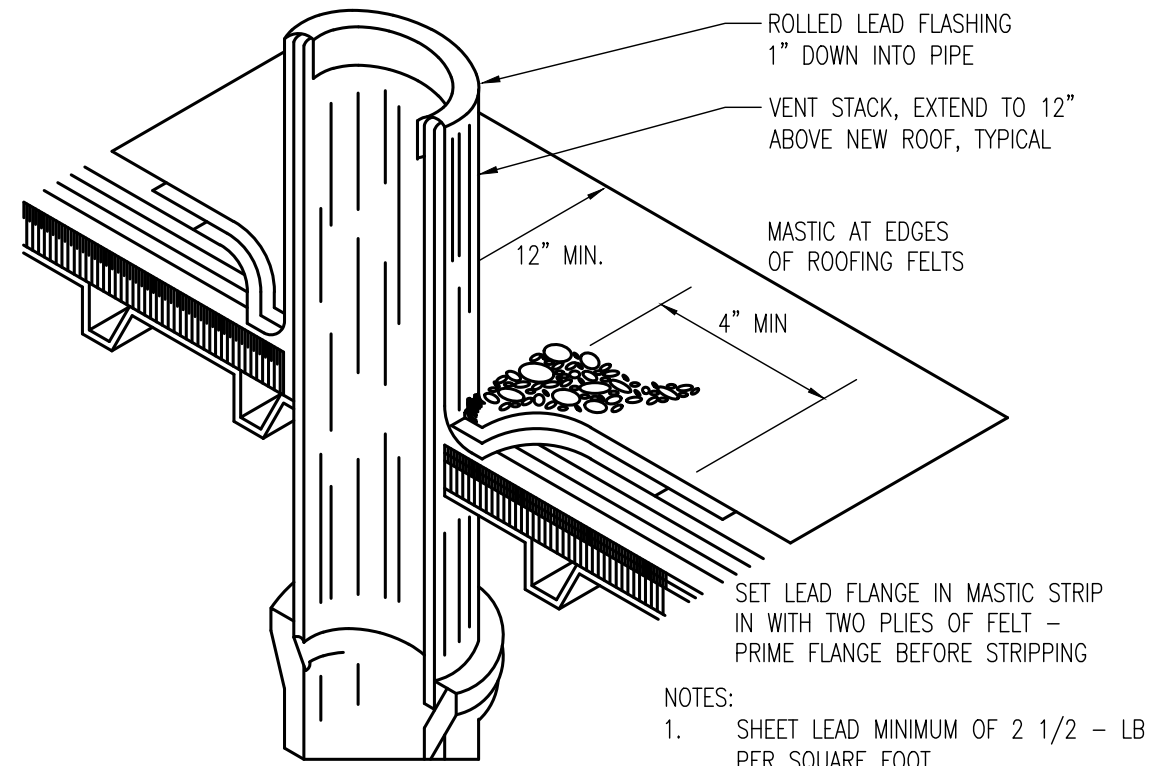
**04 ELEC. W/H CIRC. PUMP DETAIL**  
SCALE: N.T.S.



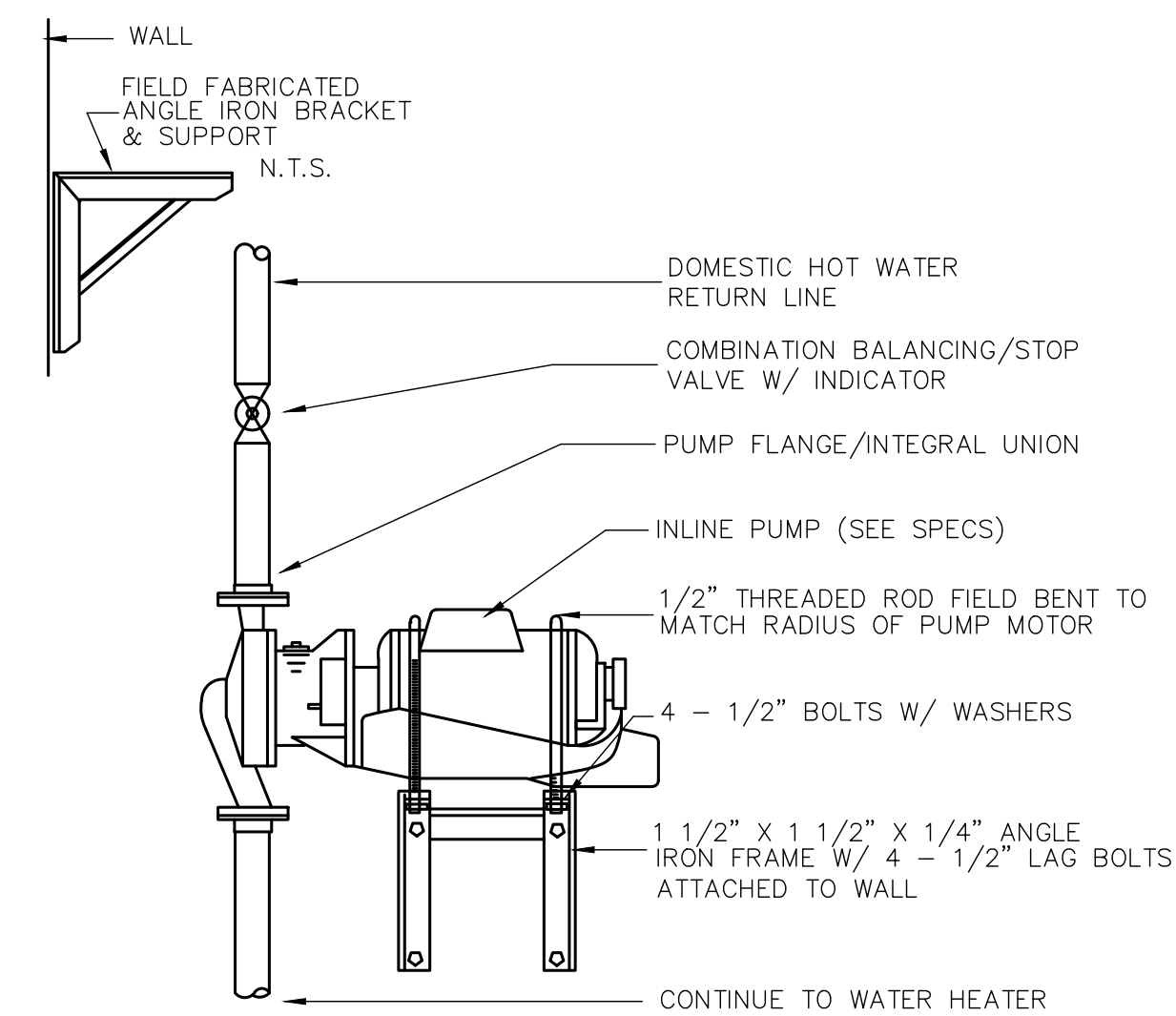
**05 FIRE DAMPER INSTALLATION DETAIL - WALL**  
SCALE: N.T.S.



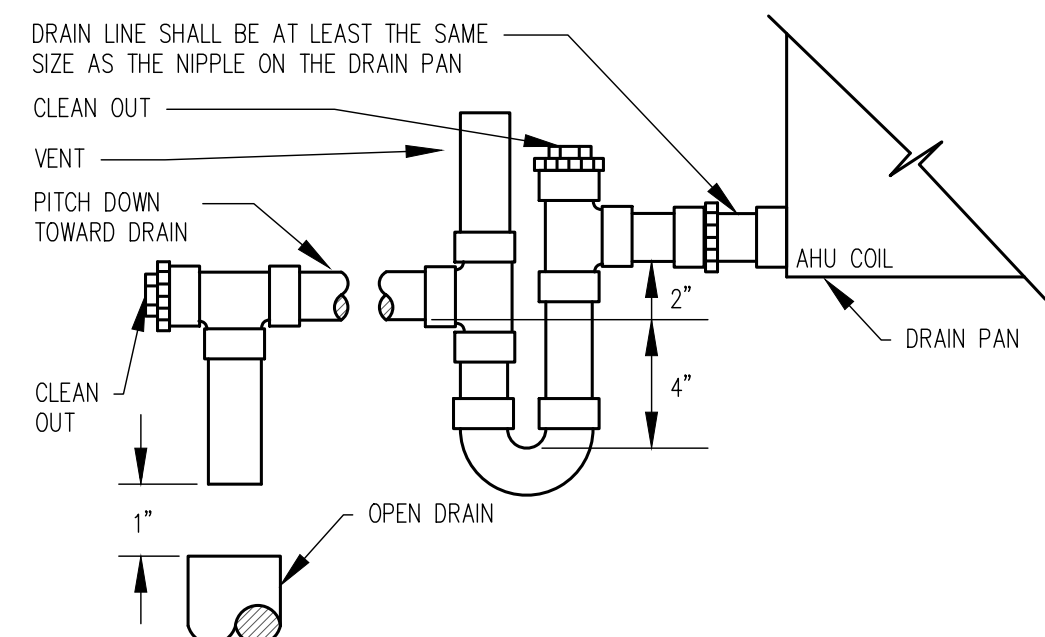
**06 ACCESS PANEL FOR OVAL/ROUND DUCT**  
SCALE: N.T.S.



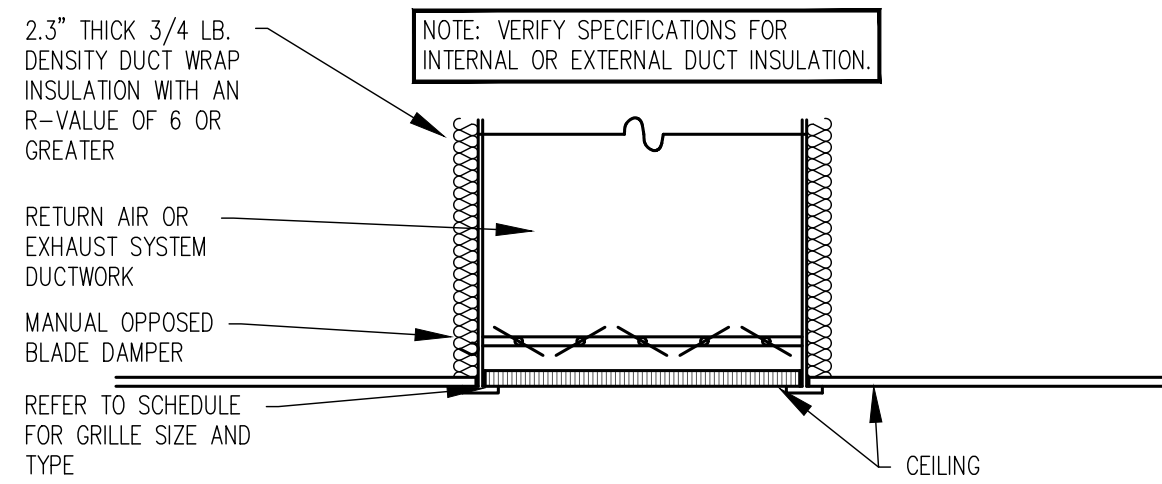
**07 FLASHING AT ROOF PENETRATION**  
SCALE: N.T.S.



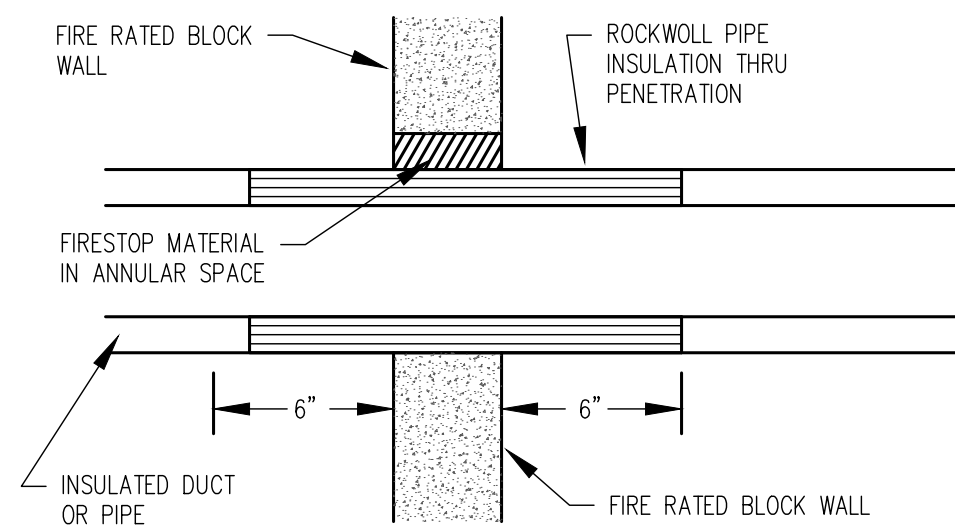
**08 DOMESTIC CIRCULATING PUMP DETAIL**  
SCALE: N.T.S.



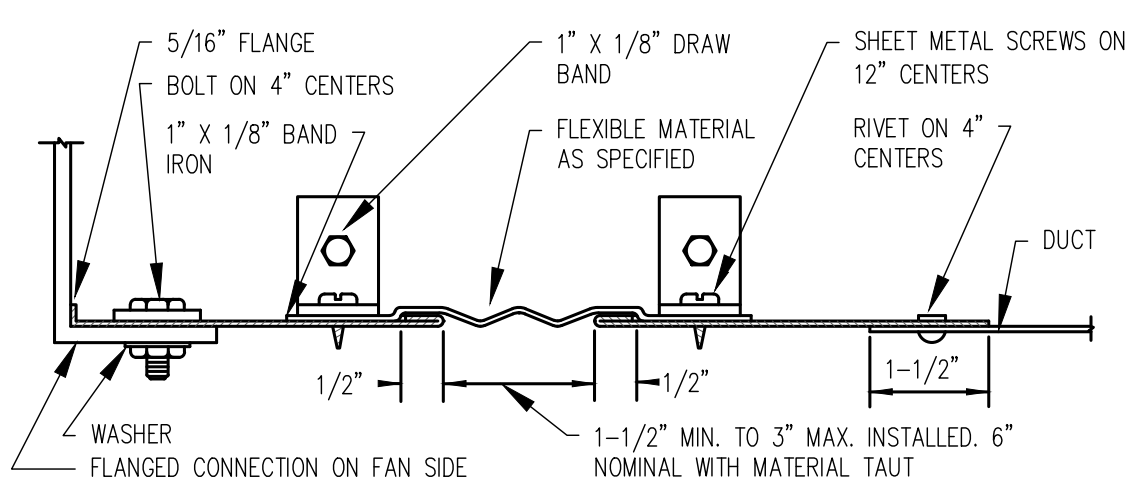
**09 AIR HANDLING UNIT DRAIN TRAP**  
SCALE: N.T.S.



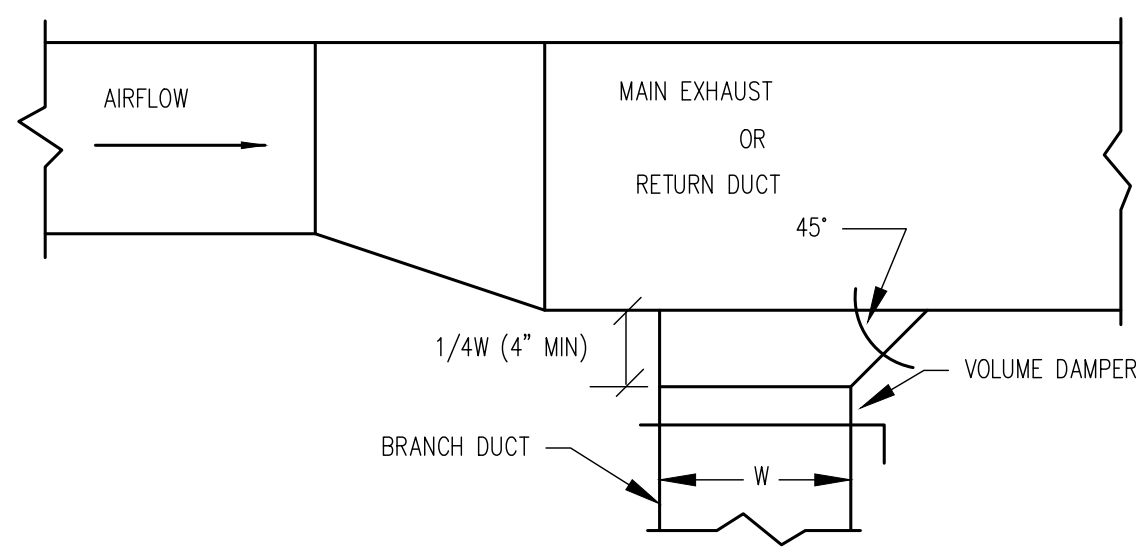
**10 EXHAUST/RETURN GRILLE DETAIL**  
SCALE: N.T.S.



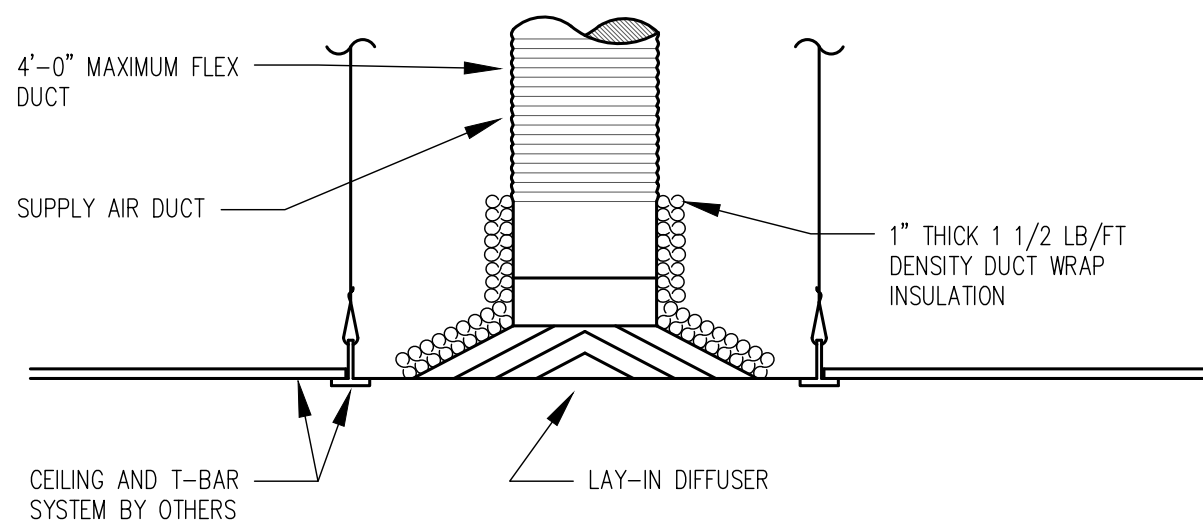
**11 FIREWALL PENETRATION DETAIL**  
SCALE: N.T.S.



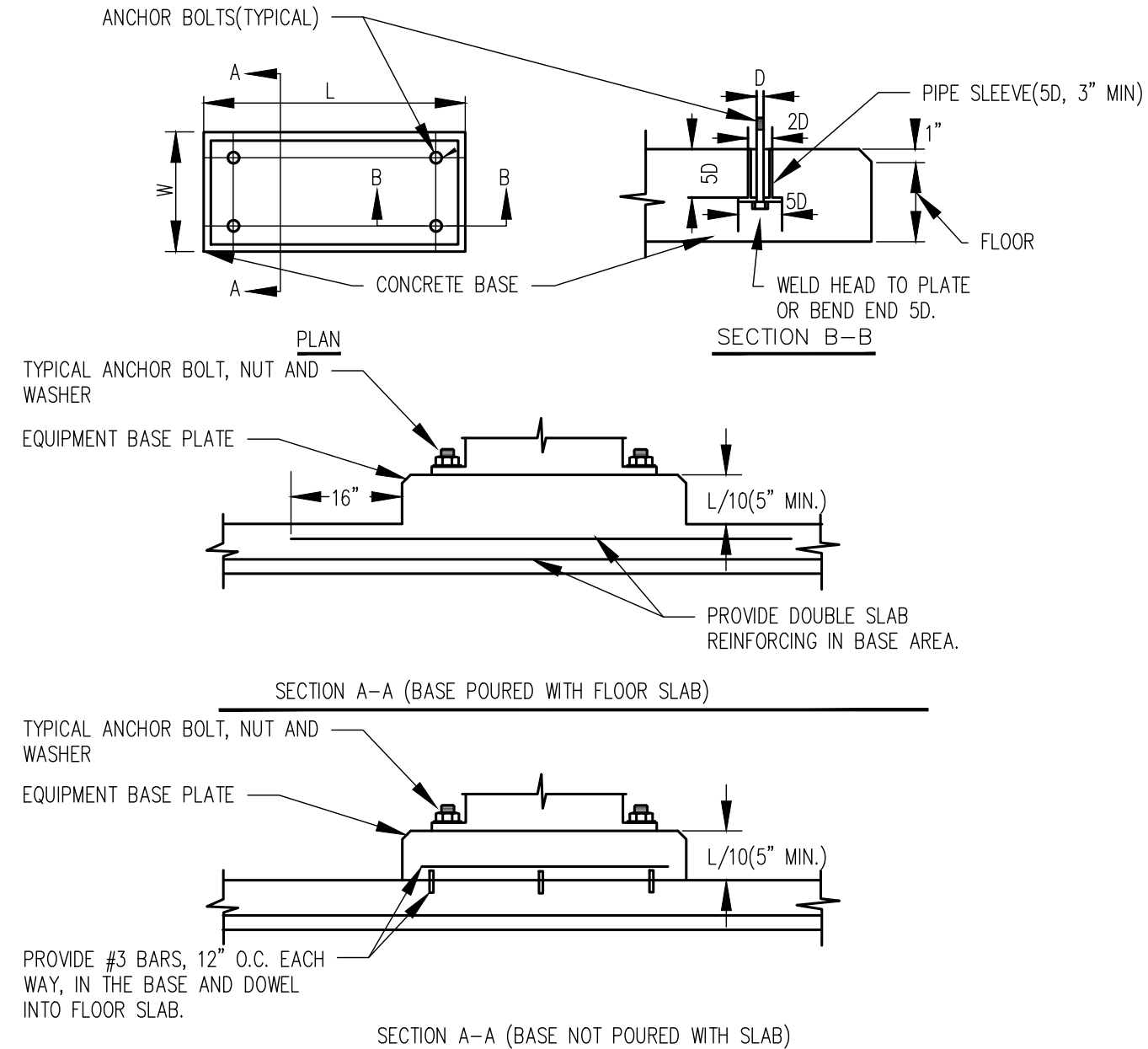
**12 ROUND DUCT FLEX CONNECTION**  
SCALE: N.T.S.



**13 EXHAUST/RETURN BRANCH DUCT DETAIL**  
SCALE: N.T.S.



**14 LAY-IN DIFFUSER INSTALLATION DETAIL**  
SCALE: N.T.S.



**15 CONCRET EQUIPMENT BASES**  
SCALE: N.T.S.

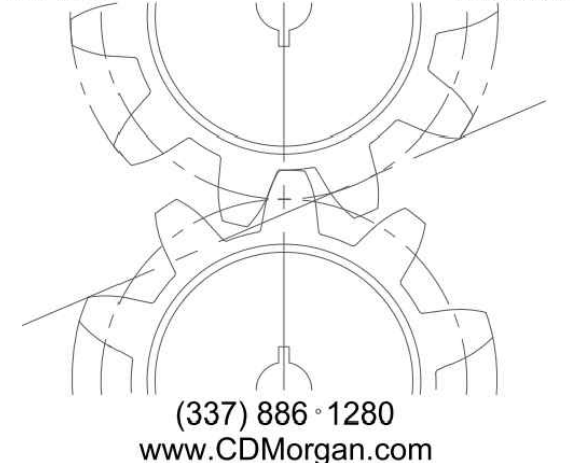


Job Title: \_\_\_\_\_  
**Office of the State  
Public Defender  
District 8  
Office Building**

111 West Main Street  
Winnfield, LA 71483

**CDMorgan**

**& ASSOCIATES, INC.**  
ENGINEERING CONSULTANTS  
A PROFESSIONAL ENGINEERING AND ARCHITECTURAL CORPORATION  
CARENCRO LOUISIANA



(337) 886-1280  
www.CDMorgan.com

Seal: \_\_\_\_\_

May 15, 2026  
**Construction Documents**

No.	Description	Date

KEY PLAN

**MECHANICAL DETAILS**

Project No.: BL0001-25 Drawn By: TWN

Sheet No.: **M3** | **OSPD**